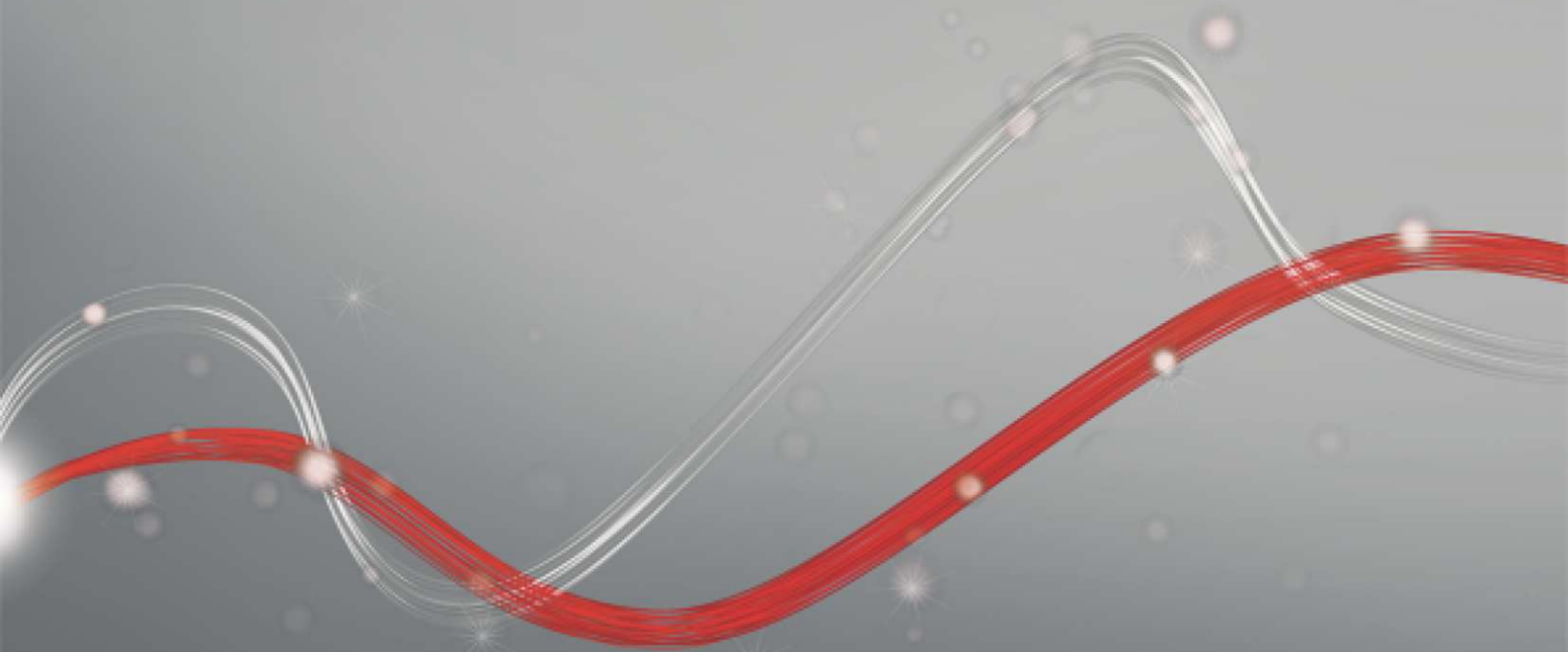




Be ahead

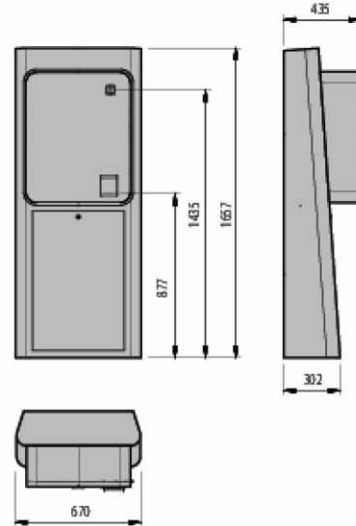


ESPAS 30-P ULTRA





ESPAS 30 ULTRA



La caisse de paiement automatique Espas30-P Ultra est destinée à doter les systèmes de stationnement câblés professionnels d'un dispositif des plus performants pour les services de caisse automatique. Elle fait l'interface entre les autres éléments du système au sein d'un réseau câblé. L'utilisateur est guidé tout au long des opérations de paiement, grâce à une division claire entre les différents composants, une interface graphique simple et moderne, et une assistance par LED et messages vocaux. Pour répondre aux différents besoins, plusieurs versions de la station de paiement sont possibles.

| | ESPAS 30-P ULTRA |
|-------------------------------------|--|
| Tension d'alimentation | 230 VCA $\pm 10\%$, 50 Hz-60 Hz |
| Consommation maximale | 350 W |
| Consommation de courant en pause | 150 W |
| Température de fonctionnement | 0 \div 50 °C |
| Dimensions | 1 657 x 670 x 435 mm |
| Poids brut | 100 kg |
| Interface de communication standard | TCP/IP |
| Couleur standard | RAL7015 |
| Matière | Structure en tôle DD11 (UNI EN 10111) de 2 mm d'épaisseur ; porte avant de 3 mm d'épaisseur ; façade en polycarbonate anti-usure et anti-rayure. |





ESPAS 30-P ULTRA



ESPAS 30 ULTRA

| Code | Nom | | Écran tactile | Module imprimante/lecteur | Interphone IP | Accepteur de billets | Trémie (hopper) pour pièces | Accepteur de (pièces de) monnaie | Recycleur de billets | carte de crédit | Lecture de deuxième code-barres de bonus. |
|---------------|---|-----|---------------|---------------------------|---------------|----------------------|-----------------------------|----------------------------------|----------------------|-----------------|---|
| PA1D401R10000 | ESPAS 30-P ULTRA EUR CC-ITA RF | new | . | . | | | | | | . | . |
| PA1D402R10000 | ESPAS 30-P ULTRA EUR CC-FRA RF | new | . | . | | | | | | . | . |
| PA1D404R10000 | ESPAS 30-P ULTRA EUR CC-DEU RF | new | . | . | | | | | | . | . |
| PA1D607R10000 | ESPAS 30-P ULTRA HRK CC-HRV RF | new | . | . | | | | | | . | . |
| PA1D105R10000 | ESPAS 30-P ULTRA AUD CC-AUS RF | new | . | . | | | | | | . | . |
| PA1DD06R10000 | ESPAS 30-P ULTRA PLN CC-POL RF | new | . | . | | | | | | . | . |
| PA1DD06R12000 | ESPAS 30-P ULTRA PLN CC-POL RF CIT-IP | new | . | . | | | | | | . | . |
| PA1D503R10000 | ESPAS 30-P ULTRA GBP CC-UK RF | new | . | . | | | | | | . | . |
| PA1D410R10000 | ESPAS 30-P ULTRA EUR M RF | new | . | . | | | | . | | | . |
| PA1D4A0R10000 | ESPAS 30-P ULTRA EUR B R RF | new | . | . | | . | | | . | | . |
| PA1D4F0R10000 | ESPAS 30-P ULTRA EUR M B H R RF | new | . | . | | . | . | . | . | | . |
| PA1D4F1R10000 | ESPAS 30-P ULTRA EUR M B H R CC-ITA RF | new | . | . | | . | . | . | . | . | . |
| PA1D4F1R12000 | ESPAS 30-P ULTRA EUR M B H R CC-ITA RF CIT-IP | new | . | . | . | . | . | . | . | . | . |
| PA1D4F2R10000 | ESPAS 30-P ULTRA EUR M B H R CC-FRA RF | new | . | . | | . | . | . | . | . | . |
| PA1D4F2R12000 | ESPAS 30-P ULTRA EUR M B H R CC-FRA RF CIT-IP | new | . | . | . | . | . | . | . | . | . |
| PA1D4F4R10000 | ESPAS 30-P ULTRA EUR M B H R CC-DEU RF | new | . | . | | . | . | . | . | . | . |
| PA1D4F4R12000 | ESPAS 30-P ULTRA EUR M B H R CC-DEU RF CIT-IP | new | . | . | . | . | . | . | . | . | . |
| PA1D6F0R10000 | ESPAS 30-P ULTRA HRK M B H R RF | new | . | . | | . | . | . | . | | . |
| PA1D6F7R10000 | ESPAS 30-P ULTRA HRK M B H R CC-HRV RF | new | . | . | | . | . | . | . | . | . |
| PA1D6F7R12000 | ESPAS 30-P ULTRA HRK M B H R CC-HRV RF CIT-IP | new | . | . | . | . | . | . | . | . | . |
| PA1D110R10000 | ESPAS 30-P ULTRA AUD M RF | new | . | . | | | | . | | | . |
| PA1D1A0R10000 | ESPAS 30-P ULTRA AUD B R RF | new | . | . | | . | | | . | | . |
| PA1D1F0R10000 | ESPAS 30-P ULTRA AUD M B H R RF | new | . | . | | . | . | . | . | | . |






ESPAS 30-P ULTRA



ESPAS 30 ULTRA

| Code | Nom | | Écran tactile | Module imprimante/lecteur de tickets | Interphone IP | Accepteur de billets | Trémie (hopper) pour pièces | Accepteur de (pièces de) monnaie | Recycleur de billets | carte de crédit | Lecture de deuxième code-barres de bonus. |
|---------------|---|-----|---------------|--------------------------------------|---------------|----------------------|-----------------------------|----------------------------------|----------------------|-----------------|---|
| PA1D1F5R10000 | ESPAS 30-P ULTRA AUD M B H R CC-AUS RF | new | . | . | . | . | . | . | . | . | . |
| PA1D1F5R12000 | ESPAS 30-P ULTRA AUD M B H R CC-AUS RF CIT-IP | new | . | . | . | . | . | . | . | . | . |
| PA1DD10R10000 | ESPAS 30-P ULTRA PLN M RF | new | . | . | . | . | . | . | . | . | . |
| PA1DDA0R10000 | ESPAS 30-P ULTRA PLN B R RF | new | . | . | . | . | . | . | . | . | . |
| PA1DDF0R10000 | ESPAS 30-P ULTRA PLN M B H R RF | new | . | . | . | . | . | . | . | . | . |
| PA1DDF6R10000 | ESPAS 30-P ULTRA PLN M B H R CC-POL RF | new | . | . | . | . | . | . | . | . | . |
| PA1DDF6R12000 | ESPAS 30-P ULTRA PLN M B H R CC-POL RF CIT-IP | new | . | . | . | . | . | . | . | . | . |
| PA1D510R10000 | ESPAS 30-P ULTRA GBP M RF | new | . | . | . | . | . | . | . | . | . |
| PA1D5A0R10000 | ESPAS 30-P ULTRA GBP B R RF | new | . | . | . | . | . | . | . | . | . |
| PA1D5F0R10000 | ESPAS 30-P ULTRA GBP M B H R RF | new | . | . | . | . | . | . | . | . | . |
| PA1D5F3R10000 | ESPAS 30-P ULTRA GBP M B H R CC-UK RF | new | . | . | . | . | . | . | . | . | . |
| PA1D5F3R12000 | ESPAS 30-P ULTRA GBP M B H R CC-UK RF CIT-IP | new | . | . | . | . | . | . | . | . | . |
| PA1D310R10000 | ESPAS 30-P ULTRA AED M RF | new | . | . | . | . | . | . | . | . | . |
| PA1D3A0R10000 | ESPAS 30-P ULTRA AED B R RF | new | . | . | . | . | . | . | . | . | . |
| PA1D3F0R12000 | ESPAS 30-P ULTRA AED M B H R RF CIT-IP | new | . | . | . | . | . | . | . | . | . |
| PA1DC10R10000 | ESPAS 30-P ULTRA MXN M RF | new | . | . | . | . | . | . | . | . | . |
| PA1DCA0R10000 | ESPAS 30-P ULTRA MXN B R RF | new | . | . | . | . | . | . | . | . | . |
| PA1DCF0R12000 | ESPAS 30-P ULTRA MXN M B H R RF CIT-IP | new | . | . | . | . | . | . | . | . | . |

ACCESSOIRES RECOMMANDÉS

| | |
|---|--|
|  <p>D112063 - CIT-BUS MODULE</p> <p>Module numérique pour station/caisse automatique</p> |  <p>D112074 - IP MODULE</p> <p>Module d'interphonie IP (stations/caisse automatique)</p> |
|---|--|





ESPAS 30 ULTRA

ACCESSOIRES RECOMMANDÉS

| | | | | | |
|---|--|--|--|--|--|
|  | D121711 - HEATER UNIT | | | | |
| | Résistance chauffante 60 W pour station interne/caisse automatique sur lisse DIN | | | | |





INFORMATION REGARDING THE PROTECTION OF THE INDUSTRIAL AND INTELLECTUAL PROPERTY RIGHTS OF BFT. BFT SpA protects its industrial property by depositing trademarks, patents, models and designs. The intellectual property of BFT SpA is protected by copyright law. BFT SpA also protects its know-how by taking measures to protect the technical and commercial information inherent in its company and products. All the products in this catalogue are ORIGINAL BFT MODELS and only BFT SpA is authorised to produce them and market them anywhere in the world. All the commercial names in this catalogue are owned by BFT SpA, and only BFT SpA is authorised to use them in relation to the corresponding merchandise category. FALSIFIERS WILL BE PROCEEDED AGAINST IN ACCORDANCE WITH BOTH CIVIL AND CRIMINAL LAW. THESE CONDITIONS NOT ONLY GUARANTEE THE INTELLECTUAL PROPERTY RIGHTS OF BFT, BUT ALSO PROTECT CUSTOMERS BY GUARANTEEING THAT THE PRODUCTS THEY ARE PURCHASING ARE ORIGINAL BFT PRODUCTS RESULTING FROM STUDIES AND DESIGNS WITHIN THE BFT COMPANY.